

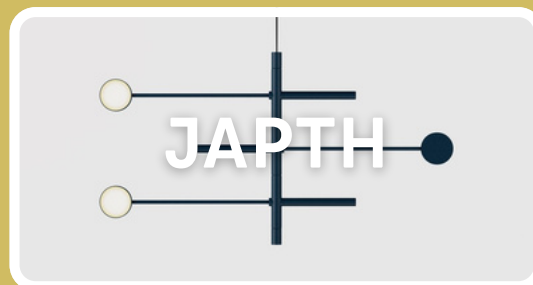
A person's hand is visible on the left side of the frame, reaching towards a large, glowing, complex geometric structure. The structure is composed of interconnected lines forming a series of overlapping polygons, with some lines glowing brightly. The background is dark, and the overall mood is futuristic and high-tech.

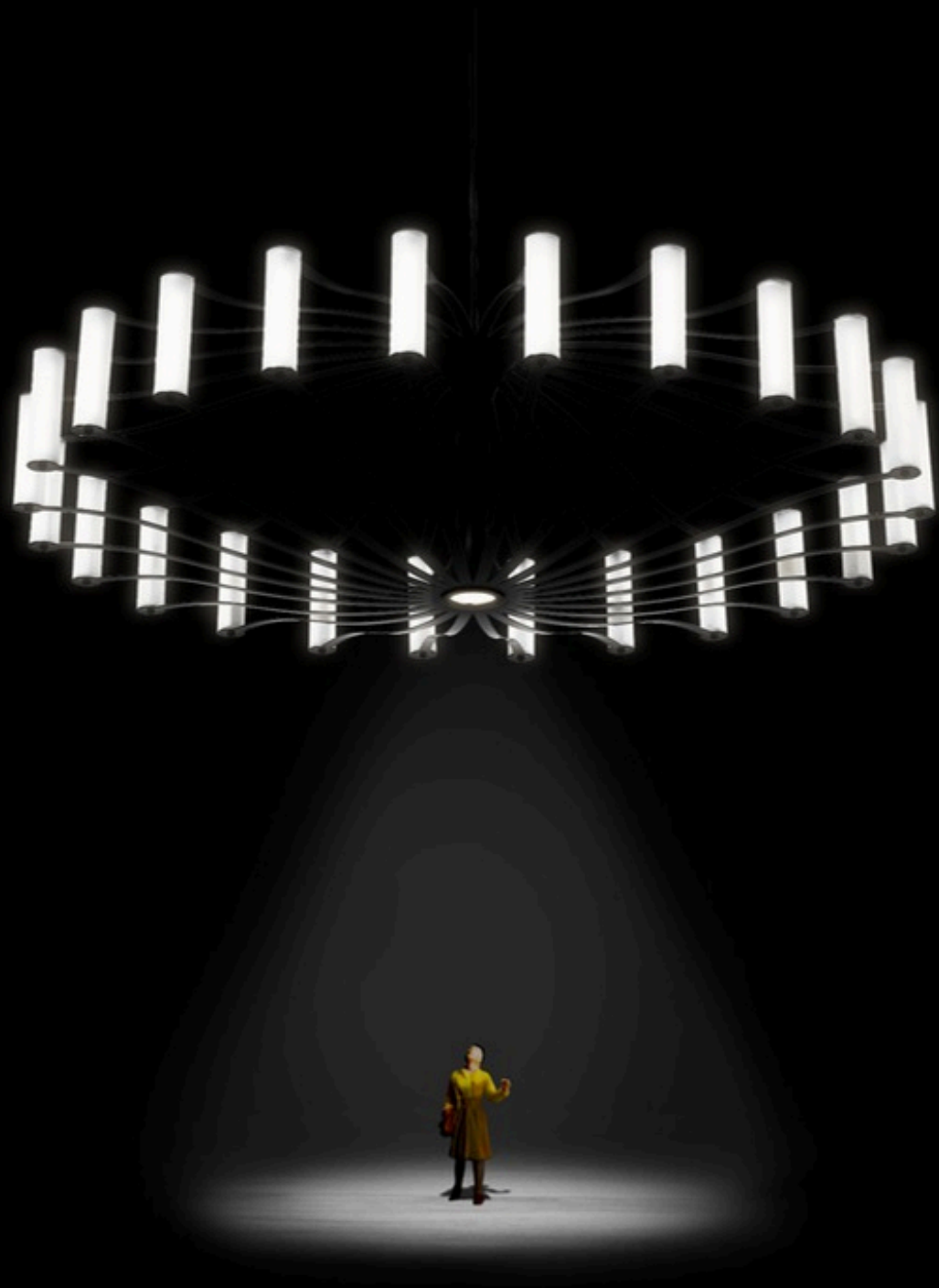
**PAST. PURE.
PRESENT.**



THREE BRANDS.
ONE VISION.

BY ANVIA.





Wheel | design by Richard Hutten

CONTENTS

ABOUT US	01
OUR COLLECTIONS	03
OUR DESIGNERS	05
DESIGNER IN THE SPOTLIGHT	07
FERROLIGHT BY ANVIA	09
JAPTH BY ANVIA	21
ANVIA CLASSICS	31
MATERIALS & COLOURS	37
MADE IN THE NETHERLANDS	39
BESPOKE LIGHTING & MADE TO ORDER	42
CONTACT & COLOPHON	44

ANVIA combines a rich heritage with timeless forms, bringing Dutch craftsmanship to contemporary living. Each piece is functional, distinctive, and enduring.

ABOUT US

ANVIA is rooted in Dutch lighting history. Founded in 1933 as the Algemeene Nederlandsche Verlichtings-Industrie Almelo, the brand became a defining name in the 1950s and 60s through the iconic modernist designs of Jan Hoogervorst. Pieces such as counter balance lamps, the Paperclip wall lamp and the legendary reading lights remain symbols of pure, functional Dutch design.

In 2014, ANVIA was revived by Michel Klein, driven by the belief that outstanding lighting design deserves a future as much as a past. His mission was clear: to preserve iconic heritage while bringing it into a contemporary context, with uncompromising attention to quality, craftsmanship, and innovation.

Today, ANVIA is the umbrella platform for three distinctive Dutch lighting worlds: the timeless classics of ANVIA, the technically refined minimalism of Ferrolight, and the sculptural, graphic character of JAPTH. Together they form a broad yet coherent portfolio, designed and produced in the Netherlands, offering lighting solutions that range from subtle to expressive.

ANVIA stands for locally made, enduring design.
Past. Pure. Present. Ready for the future.



Michel Klein



OUR COLLECTIONS

Ferrolight by Anvia

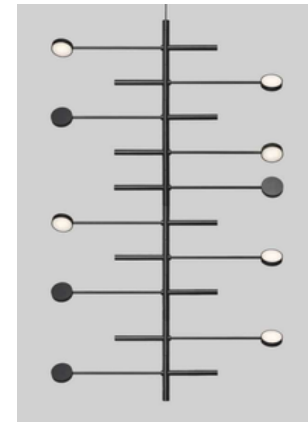
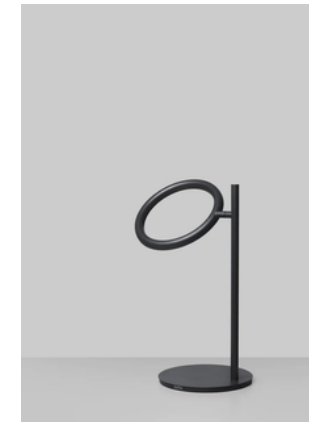
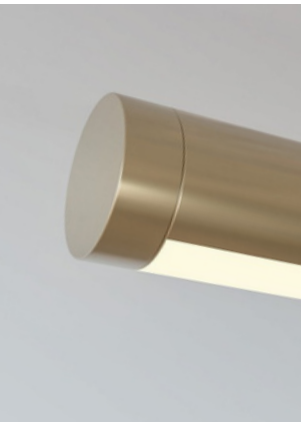
Ferrolight celebrates minimalism and purity of form. Every design fuses artistry, technology, and refined elegance, creating lighting that transforms spaces while remaining effortlessly modern and timeless.

Japth by Anvia

JAPTH explores the present in design, crafting sustainable LED lamps with distinctive character. Collaborative, innovative, and contemporary, the collection embodies creativity, flexibility, and the future of lighting.

Anvia Classics

Anvia Classics revives the legacy of Dutch mid-century lighting, blending timeless design with meticulous craftsmanship. Each lamp reflects history, authenticity, and the enduring beauty of classic, functional forms.





LIGHT IS
THE FIRST
OF PAINTERS.

— *Ralph Waldo Emerson*

Tray | design by Richard Hutten

OUR DESIGNERS

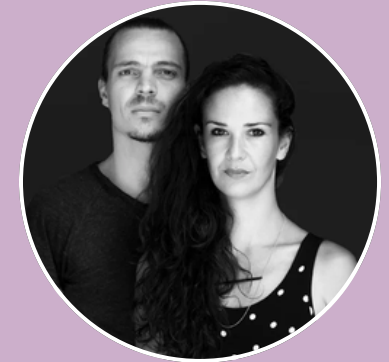
ANVIA is built on the strength of Dutch design. Across all three collections, we collaborate with a carefully selected group of renowned Dutch designers, each bringing a unique perspective on light, form, and function. From timeless modernist classics to bold contemporary statements, their creativity shapes a portfolio that is both diverse and unmistakably coherent.

Designers such as Richard Hutten, Daphna Laurens, Willem Schouten, Ferdinand Verbeek, the designers collective Yksi and the Belli brothers contribute to collections that range from subtle and architectural to graphic and sculptural. Their work reflects the richness of Dutch design culture: intelligent, refined, and always rooted in function.

Together, these collaborations strengthen ANVIA as a platform where heritage meets innovation, and where lighting is conceived and crafted in the Netherlands with uncompromising attention to detail, quality, and character.



Richard Hutten



Daphna Laurens



Willem Schouten



Ferdinand Verbeek



Ingrid Roos



Yksi Ontwerp



ByBelli



LIGHT IS THE
SYMBOL OF
TRUTH.

— James Russell Lowell

DESIGNER IN THE SPOTLIGHT

Jan Hoogervorst

Johannes Joseph Maria (Jan) Hoogervorst (1918–1982) was a gifted architect, draftsman, and painter whose creativity led to a successful career in industrial design. Starting with furniture and later focusing on lighting, he developed a distinctive style combining artistry with functional elegance.

For decades, Hoogervorst worked closely with ANVIA, designing new collections almost every year. His innovative lamps helped build the brand's international reputation and made it synonymous with high-quality Dutch lighting design.

Many of Hoogervorst's creations have become collector's items, most notably the Hengellamp, known for its elegant rod-like form, along with designs like the 8025 floor lamp, 6019 desk lamp, and the widely used hospital bedside lamp.

His early work was inspired by progressive Italian design, later evolving toward purity, proportion, and restrained sophistication, securing his reputation as a leading Dutch mid-century lighting designer with globally used designs.



TIMELESS BY DESIGN.



1501 | The Director | design by Jan Hoogervorst

FERROLIGHT BY ANVIA

Purely minimalist

Ferrolight represents purity in design and light. The Ferrolight vision elevates minimalism, artistry, and innovation, producing lighting that transforms interiors and enhances experiences. Each lamp is conceived with precision, balancing functional requirements with aesthetic expression. Linear forms, geometric shapes, and sculptural pendants harmonize with spaces, reflecting simplicity while evoking emotion and creativity. Technology and craft merge seamlessly, ensuring that each piece is versatile, durable, and visually striking.

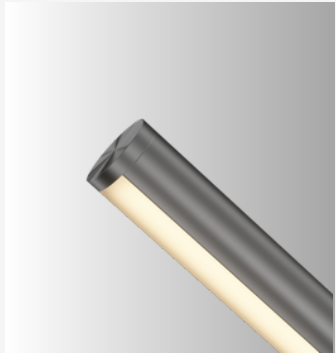
Ferrolight designs are contemporary yet timeless, emphasizing refined materials, clean lines, and subtle sophistication. By focusing on purity of form and clarity of expression, every lamp becomes more than illumination; it becomes an element of design that shapes the mood, character, and atmosphere of a room. Ferrolight's collection celebrates the elegance of restraint, the power of minimalism, and the transformative potential of light.



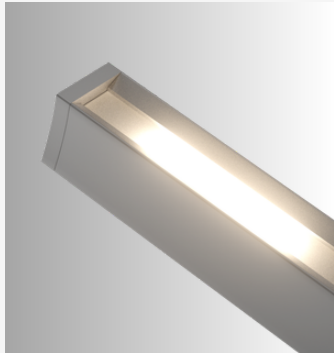
Scan here for
the complete
collection



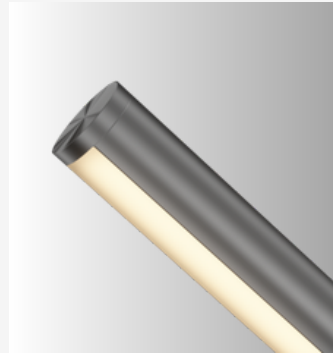
Mikró



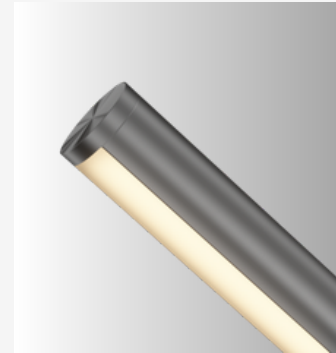
Sunsister



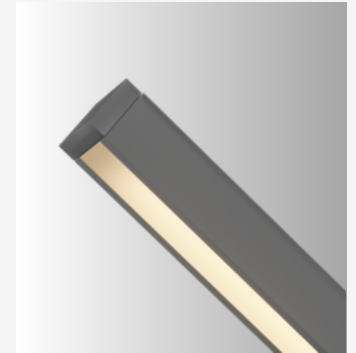
Yin



Yin Yang



Yin Yang Plus



Flow



Sphere



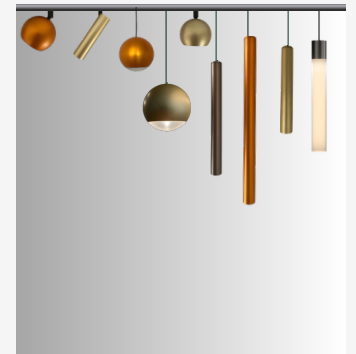
Zeus



Cube

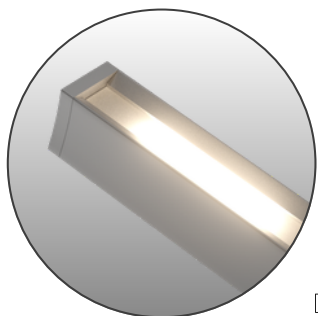


Orbit





LIGHT LINES



□ 20x23 mm

FERROLIGHT by ANVIA

Sun Sister Plus

Sun Sister Plus is a refined statement piece that brings both atmosphere and innovation to the heart of the home. Designed for dining tables, kitchen islands, and central spaces, it creates an elegant presence while offering a beautifully adaptable lighting experience.

Technology

Sun Sister Plus features adjustable white light from warm to cool (2700–4000K). This new model introduces integrated contactless gesture control, allowing effortless switching, dimming, and colour temperature adjustment with simple hand movements. Mechanical or electric height adjustment can be added on request.





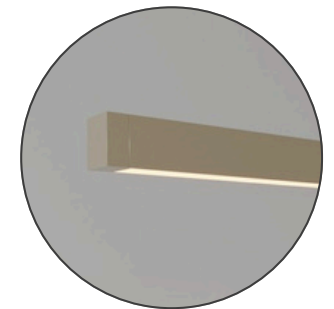
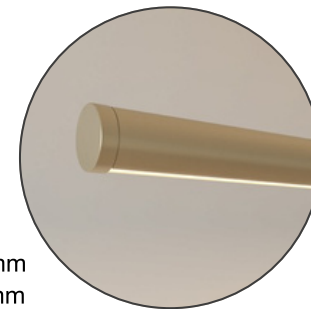
Yin Yang Series

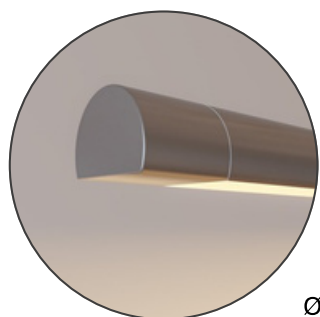
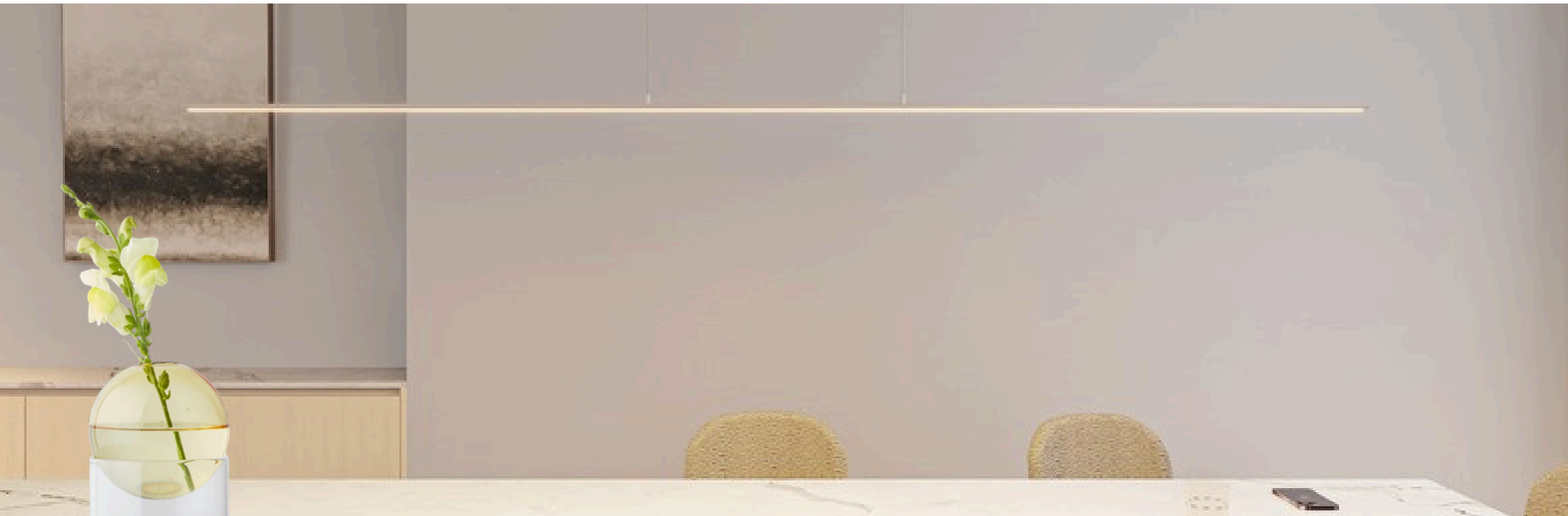
Yin Yang is a refined lighting series built around balance, rhythm, and pure linear form. The collection includes both square, rectangular and circular fixtures, offering elegant solutions for dining areas, workspaces, and architectural interiors. Different versions within the series allow subtle variations in shape and light direction, making Yin Yang a versatile design family where minimalism meets atmosphere.

Technology

Yin Yang is available as up- and downlight. Plus editions offer separately controllable uplight and downlight for greater flexibility in atmosphere and function. Mechanical or electric height adjustment can be added on request.

Ø 23 mm
□ 20 mm





Ø 13 mm

Mikró

Mikró is our ultra-slim, round linear downlighter, the thinnest linear fixture in our collection. Its refined, minimalist design brings elegance and subtlety to any interior, creating a seamless lighting effect without dominating the space.

Technology

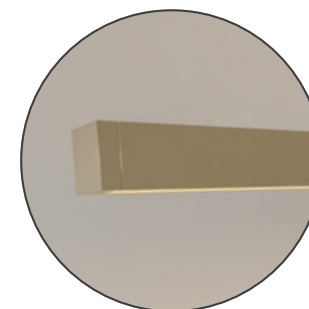
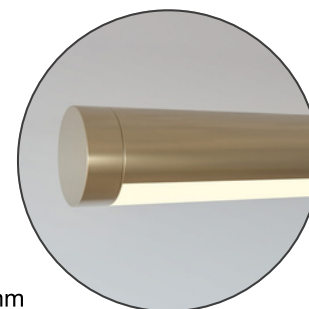
Mikró is phase-cut dimmable, ensuring smooth, flicker-free light. Its advanced LED system delivers consistent brightness and efficiency, combining precision with reliable performance in a minimal form. Mechanical or electric height adjustment can be added on request.



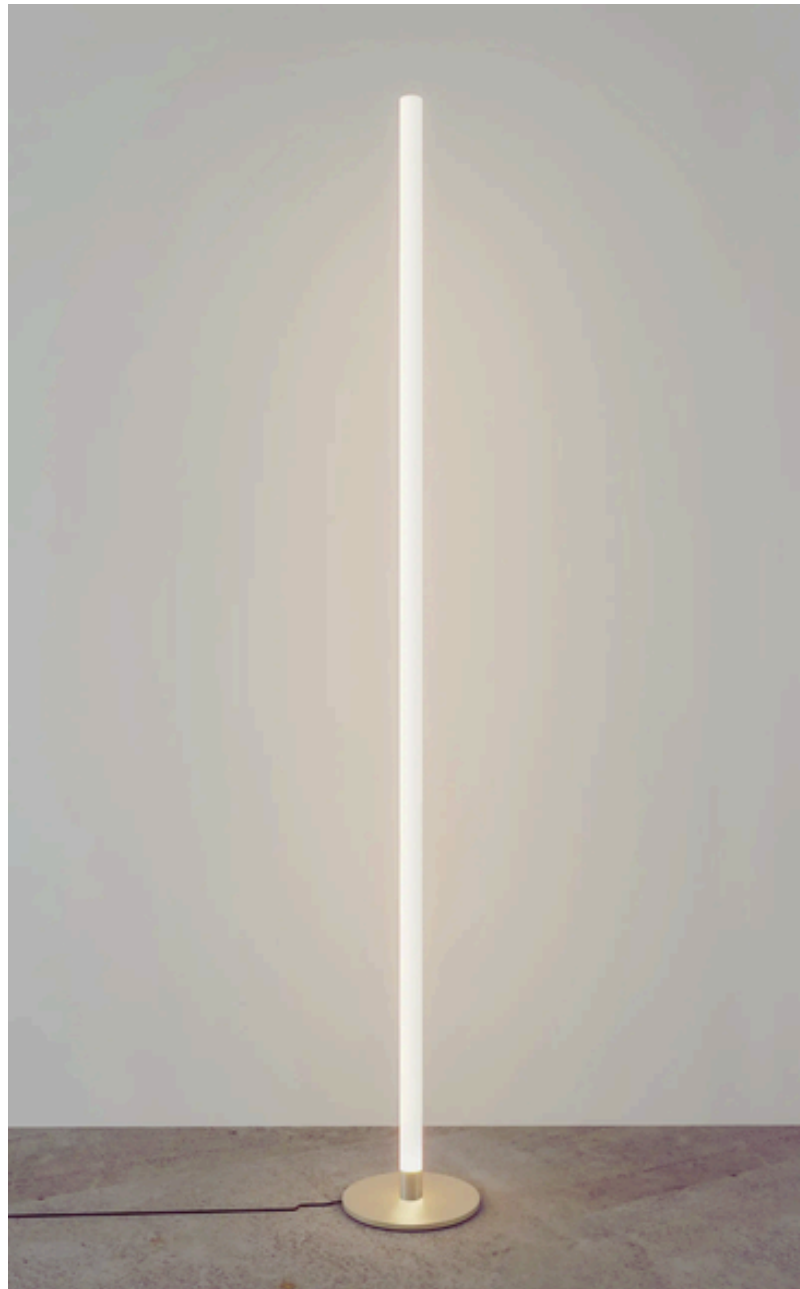
Yin Series

Yin is the purest expression of the collection: a minimalist luminaire designed with clarity and restraint. Its clean, slender form delivers focused downward light, making it ideal for dining tables, kitchens, and refined architectural settings. Yin brings simplicity, precision, and atmosphere together in one timeless design. Available in straight, circular, square, and rectangular variations, it offers a versatile foundation for precise illumination.

- Ø 17 mm
- 15 mm
- 30x15mm



LIGHT AS FORM



Flow

A slender, elegantly curved floor lamp that brings harmony of light and design to any interior. Its minimalist silhouette fits seamlessly into living spaces, offering subtle, dimmable illumination while adding a touch of refined sophistication and timeless style.

Zeus

A minimalist lamp with a transparent perspex stem enhanced with integrated nanoparticles, creating a soft, even glow. Dimmable and refined, it is available as a floor or table lamp, delivering a unique and captivating lighting experience.

Zeus Stick

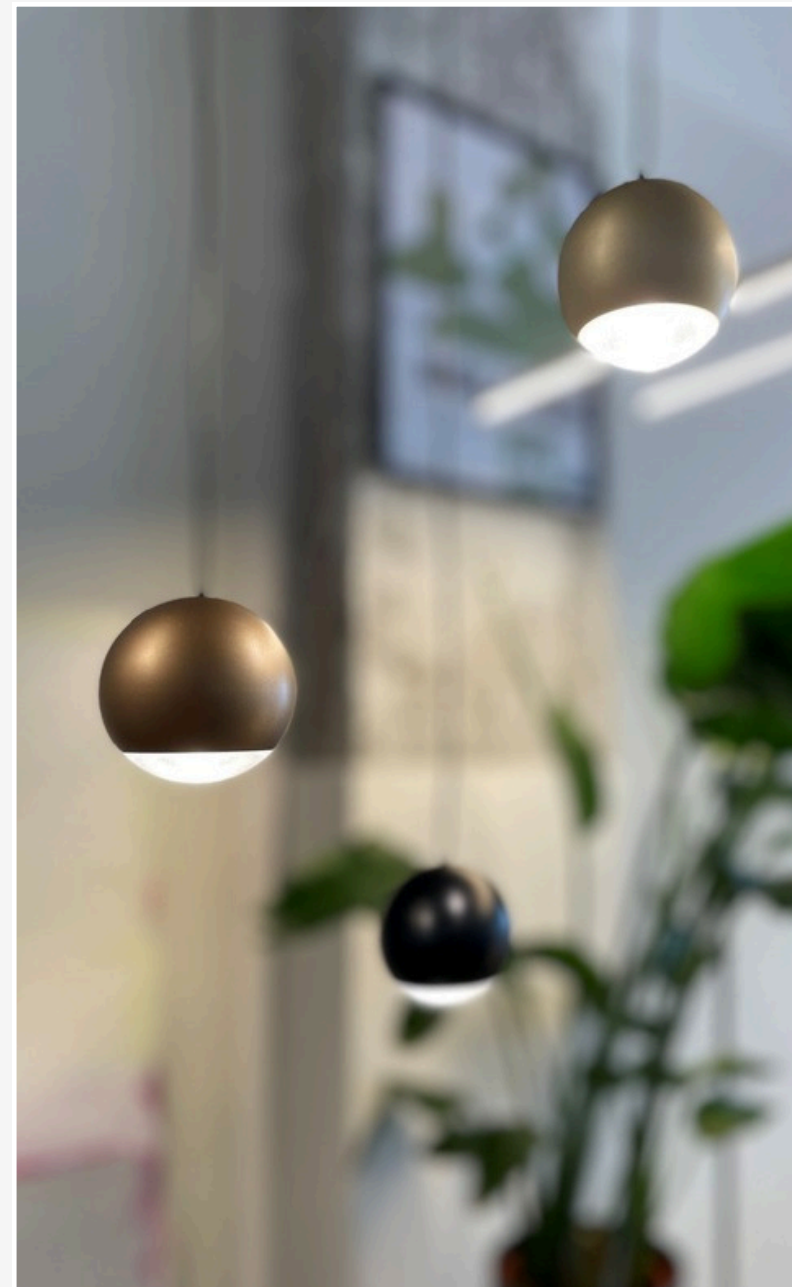
Originally designed as a chandelier for the Rietveld House, Zeus Stick creates an impressive and atmospheric presence. Its transparent pendulums are illuminated through a distinctive lighting technique, producing a warm, subtle glow. Available with one, three, five, or any custom number of pendants, the fixture can be composed to suit both intimate and large-scale interiors, transforming light into a unique spatial experience.



Sphere

A refined ceiling lamp with a timeless spherical design, now also available in a larger XL version. The opal glass shade forms a perfectly seamless sphere, flowing smoothly into its flawless round shape. It emits a soft, even glow, and multiple spheres can be arranged freely to suit any space.

FERROLIGHT by ANVIA



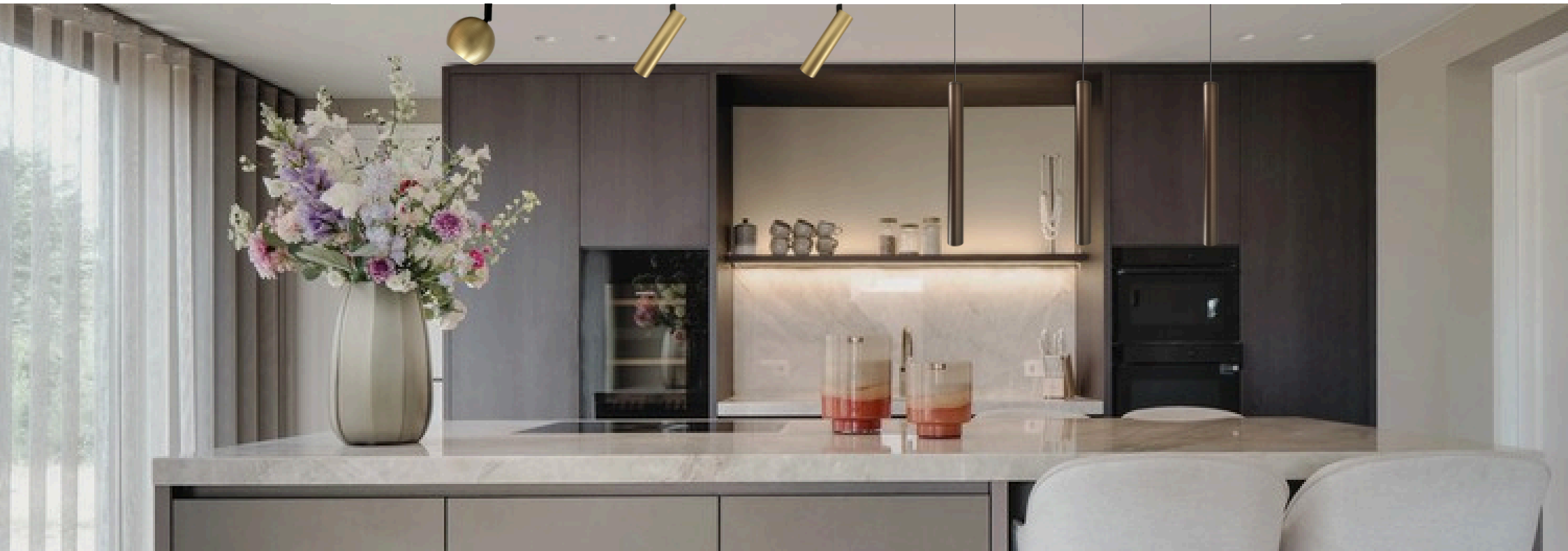
Flow

Flow is a sleek tubular pendant defined by its pure proportions and understated elegance. Its slender form creates a calm, architectural presence with a soft, focused glow. Available in various lengths, Flow can be used individually or combined in balanced compositions to create rhythm and visual impact.

Spoetnik

Completely redesigned, Spoetnik is a refined and striking ceiling lamp with ten or twenty arms. Its futuristic form is now dimmable, combining sculptural elegance with subtle, controllable light for a bold yet sophisticated statement in any interior. Spoetnik is now also available in our anodised colour finishes.





HIGHLIGHTED

Orbit

A new modular lighting system featuring a range of click-on light modules. The collection includes spherical spotlights, linear spot units, and nanoparticle sticks that create an exceptionally soft, diffuse, and evenly distributed light. With the freedom to combine shapes and colors, Orbit can be fully customized to suit any interior. Each configuration becomes a unique composition, designed to adapt, inspire, and illuminate.

Technology

Orbit lights are intended for use in a 48V micro track and offers dim-to-warm or fixed 2700 K options (other colour temperatures on request). It can be controlled via 1–10V, DALI-2, or Casambi, giving precise, flexible control over light output and atmosphere. On request Orbit lights can be customized to 24V, 1 and 3 phase tracksystems.

Orbit Elements

Flow spot 10 cm



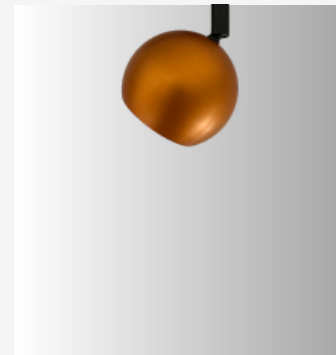
Flow pendant 20 cm



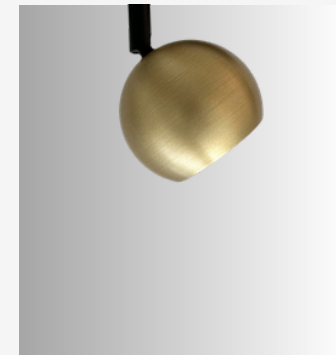
Flow pendant 30 cm (40-50-60 cm)



Sphere spot



Sphere XL spot



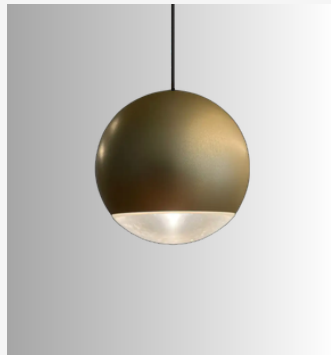
Zeus pendant



Sphere



Sphere XL



Mikró pendant





JAPTH BY ANVIA

Design in Balance

JAPTH embodies the present, exploring innovative LED lighting solutions with distinctive character. Founded as a platform for collaboration, it brings together established and emerging designers to create unique floor and pendant lamps. Each lamp is produced in the Netherlands using carefully selected materials, combining craftsmanship with modern production techniques to support quality and longevity.

The designs are expressive, sculptural, and functional, reflecting contemporary lifestyles and interior needs.

JAPTH emphasizes creativity, flexibility, and forward-thinking design, ensuring every piece is visually compelling and highly practical. The collection encourages exploration of form, light, and color, offering strong possibilities for personalization. With its modern sensibility, JAPTH illuminates interiors while inspiring creativity and shaping the future of design.

Echo & Echo small | design by ByBelli

Scan here for
the complete
collection



Dodeca



Wheel



Kingpin



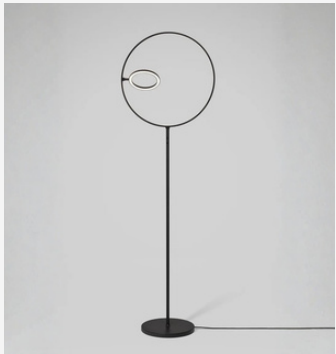
Tray



Satellite



Echo



Echo Slim



Linedot



Echo Small



Wheel





SCULPTURAL SIMPLICITY

Dodeca

Designed by Willem Schouten, Dodeca is inspired by the paradox of traditional lamps that block natural light when switched off. By integrating the light source into an open frame, the design allows daylight to pass through while creating dynamic shadows when illuminated. Complex yet minimalist, Dodeca combines unique geometry with exquisite detailing, making it a distinctive statement piece in any interior.

Tray

Designed by Richard Hutten, Tray redefines the pendant lamp by combining light and function into one striking object. More than a balanced fixture above a dining table, it also serves as a suspended surface to display personal items. Light is emitted upward and downward, creating a warm atmosphere. Tray features a powder-coated finish with an oak or walnut veneer edge and is now also available in a larger oval variant.



Tray | design by Richard Hutten

TO LOVE BEAUTY
IS TO SEE LIGHT.

— Victor Hugo

WHEEL SERIES



Wheel Pendant

Designed by Richard Hutten, Wheel reflects his lifelong fascination with bicycle racing and the beauty of the wheel. The pendant is available with downlight and works equally well as a single statement piece or combined in larger compositions above a dining table. Optional electric height adjustment adds flexibility.

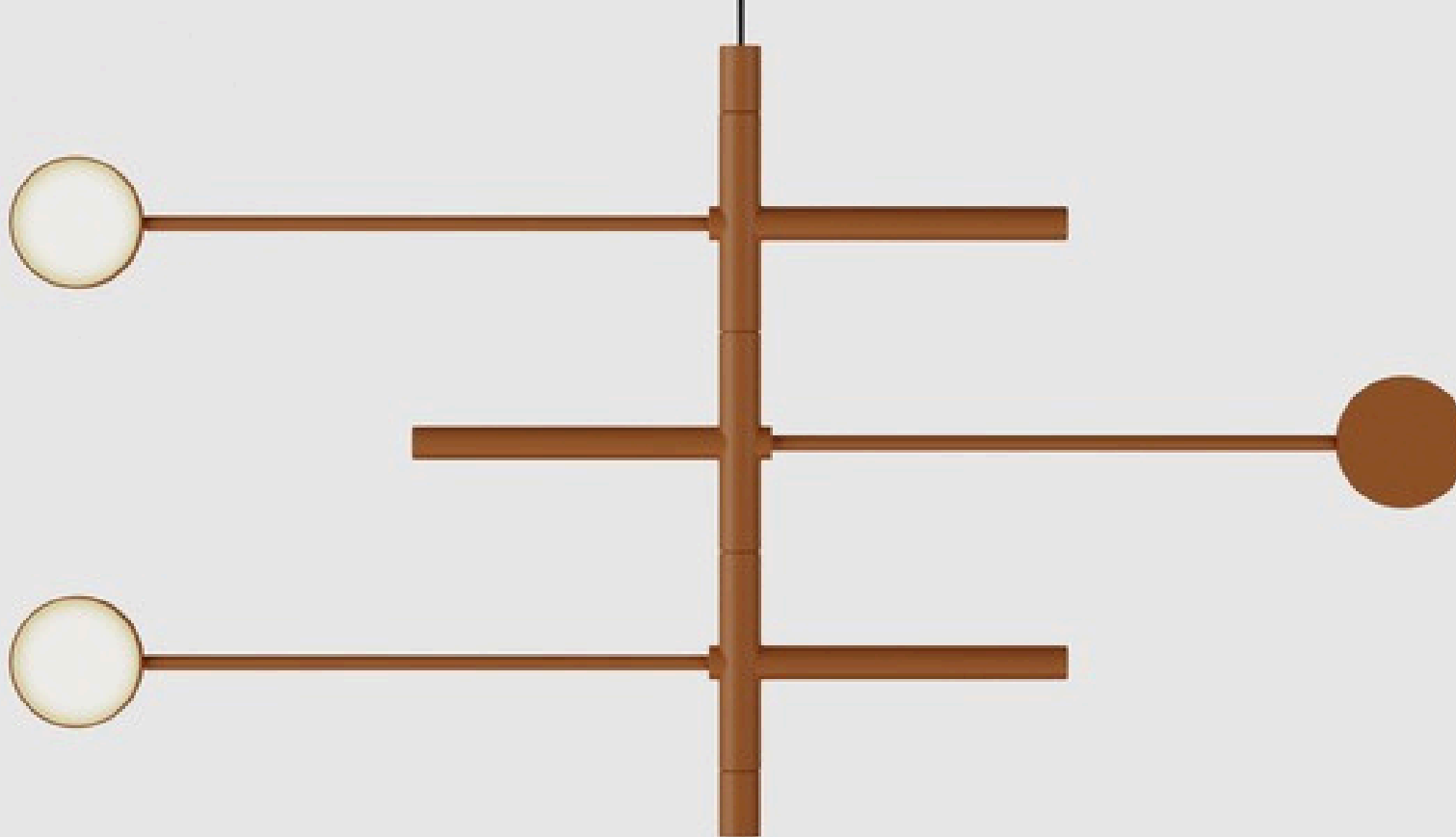
Wheel Floor

Wheel Floor translates the iconic circular form into a sculptural standing lamp with a calm, minimalist character. Depending on the version, it can be configured with an elegant upright, creating a soft ambient glow while remaining visually light and balanced.

Wheel Table

The Wheel Table Lamp captures the essence of Hutten's design in a compact, versatile piece. Its clean geometry and subtle lighting effect make it ideal for desks, sideboards, or bedside use, adding both function and a distinctive design accent.





KINGPIN FAMILY

Kingpin Pendant

Designed by Daphna Laurens, Kingpin Pendant embodies the perfect balance of elegance, size, and expressive form. Its sculptural profile creates a striking presence in any space, while the design allows light to flow freely, combining function with refined aesthetics.

Technology

Kingpin Pendant offers multiple pin configurations and adjustable LED spots for precise lighting. An optional mechanical height adjustment provides additional versatility. Available in a selection of standard colours, with additional finishes on request.



Kingpin Floor

Kingpin Floor brings the sculptural elegance of the series to a standing lamp. Designed as a refined reading light, its form directs illumination naturally while maintaining balance and sophistication. The lamp is available with 2, 3, or 5 pins; 2 or 3 pins work particularly well as a reading light.

Kingpin Table

Kingpin Table distills the series into a compact, versatile design. Two integrated LED spots provide precise light for desks or side tables, while the lamp retains the sculptural balance and expressive character of the Kingpin collection.



Echo | design by ByBelli

HIGHLIGHTED

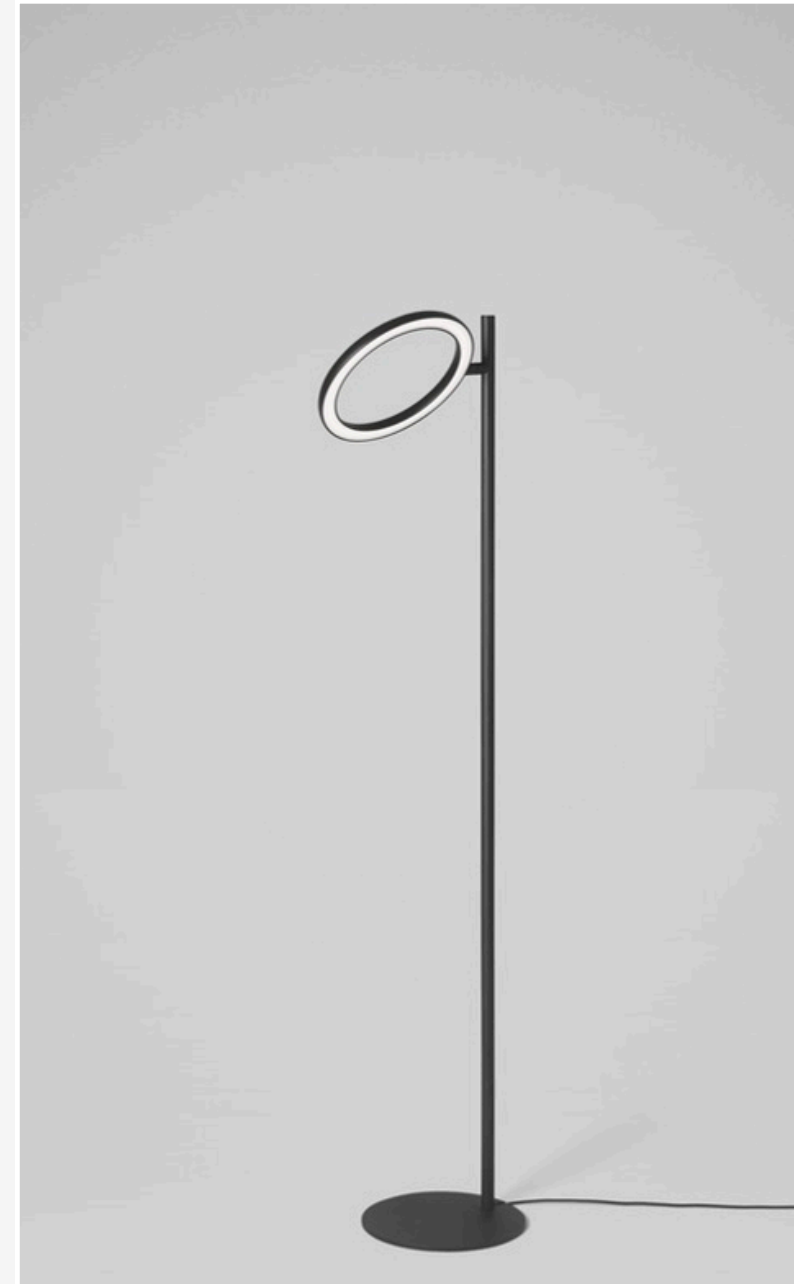
Line|Dot

Line|DOT is a minimalist lighting object composed of two black lines and a frosted white sphere. The matte glass globe diffuses a soft, dimmable glow, while the hidden light source creates an even wash across the wall. Leaning casually against the surface, Line|DOT highlights the purity of form and can be easily moved and repositioned. A rechargeable version is also available, offering complete freedom of placement.

Echo Slim

Echo Slim captures the essence of the series in its most refined form. With its rotating ring, the direction of light can be adjusted effortlessly, creating a subtle balance between soft atmosphere and focused illumination. A cordless rechargeable version is also available for complete freedom of placement.

JAPTH by ANVIA



ANVIA CLASSICS

A Legacy of Light

Anvia embodies the past, reviving a Dutch lighting legacy that spans over eight decades. Rooted in mid-century design traditions, each lamp is handmade in the Netherlands, reflecting meticulous craftsmanship and authentic character. Drawing inspiration from timeless forms, the collection honors the heritage of functional, subtle, and enduring design. Every piece tells a story of resilience and artistry, connecting history with the present through careful attention to detail and quality.

The retro-inspired lamps seamlessly blend elegance and utility, making them suitable for contemporary interiors while preserving the spirit of classic Dutch lighting. Anvia Classics' designs are more than objects; they are a celebration of heritage, a bridge between past and present, and a testament to the enduring appeal of well-crafted, thoughtful lighting.

1501 | The Director



1502 | The Grasshopper



Scan here for
the complete
collection



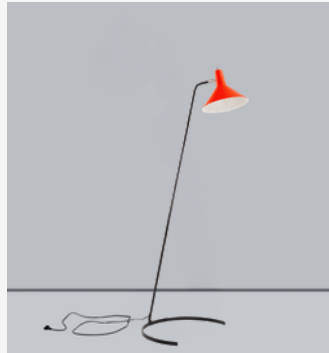
1602 | The Paperclip



1702 | The Elbow



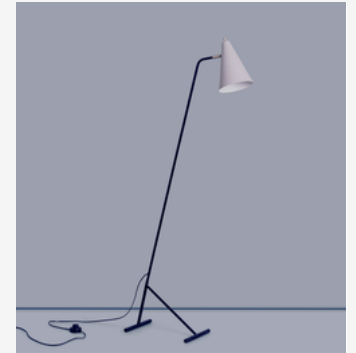
1505 | The Horse Shoe



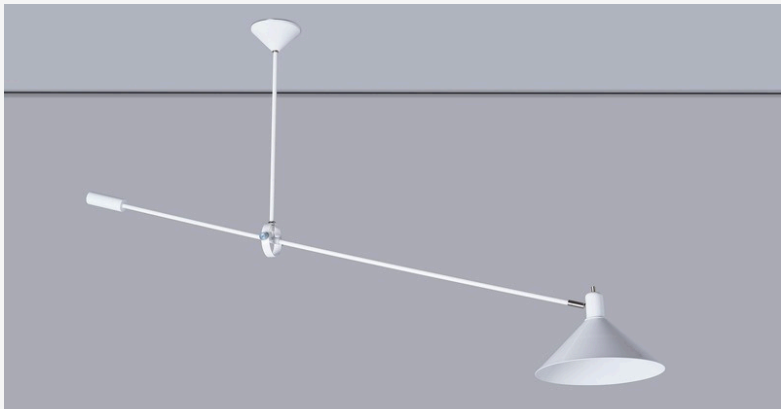
1601 | The Merchant



2008 | The Noltes



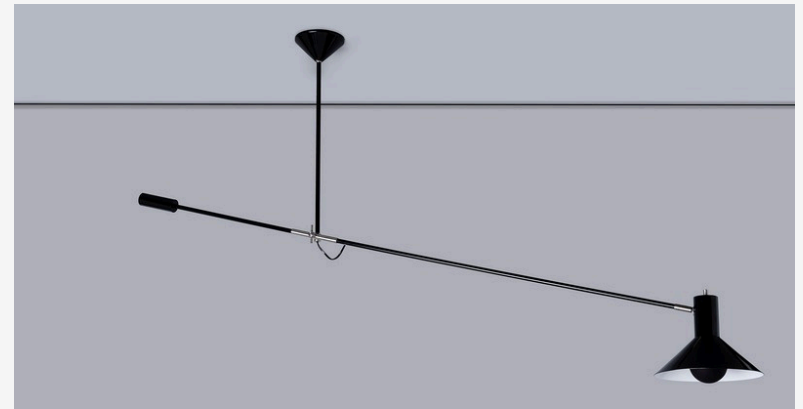
1506 | The Upper King

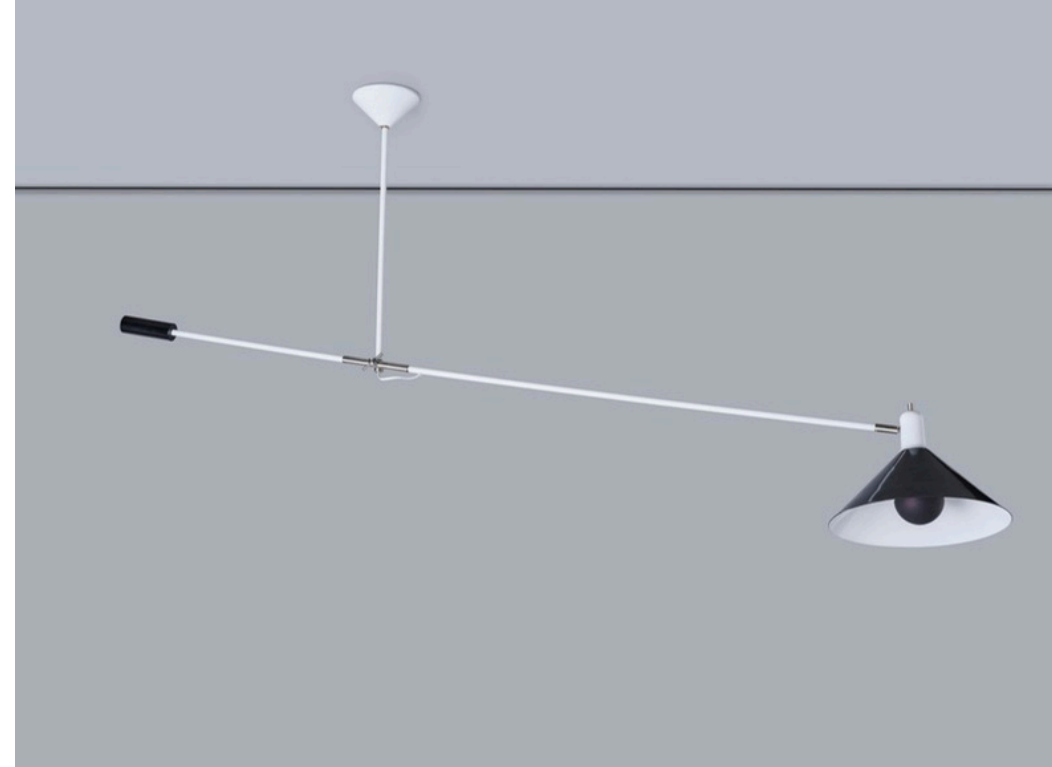
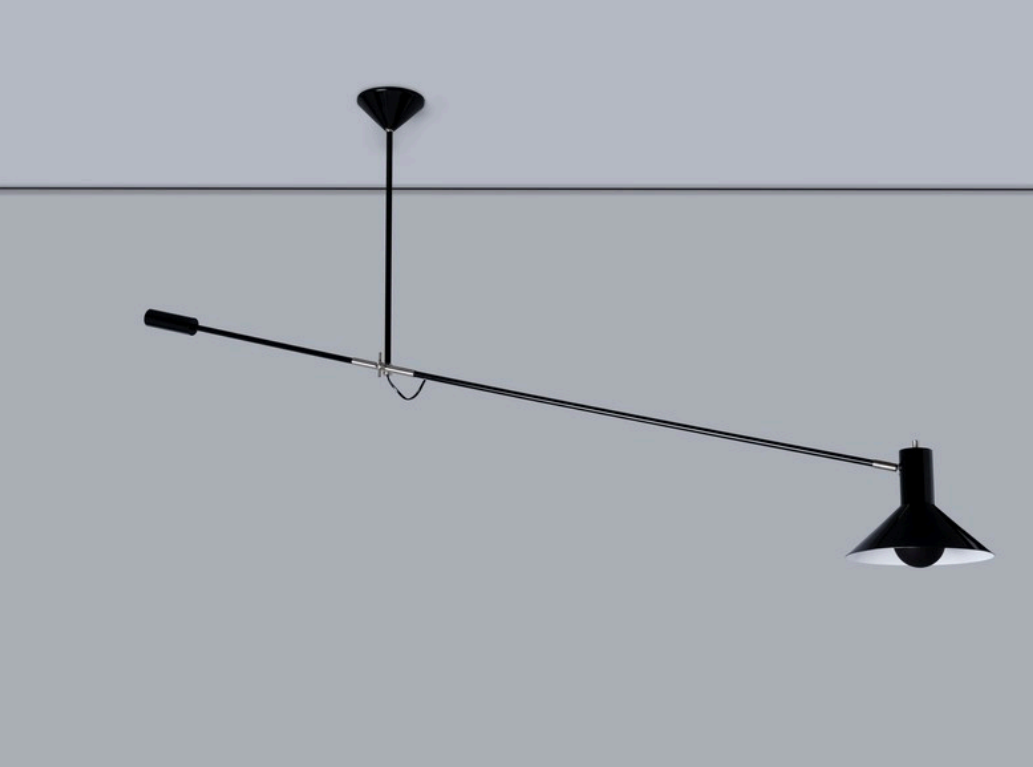


1603 | The Shade no 17



2001 | The Flying Duke





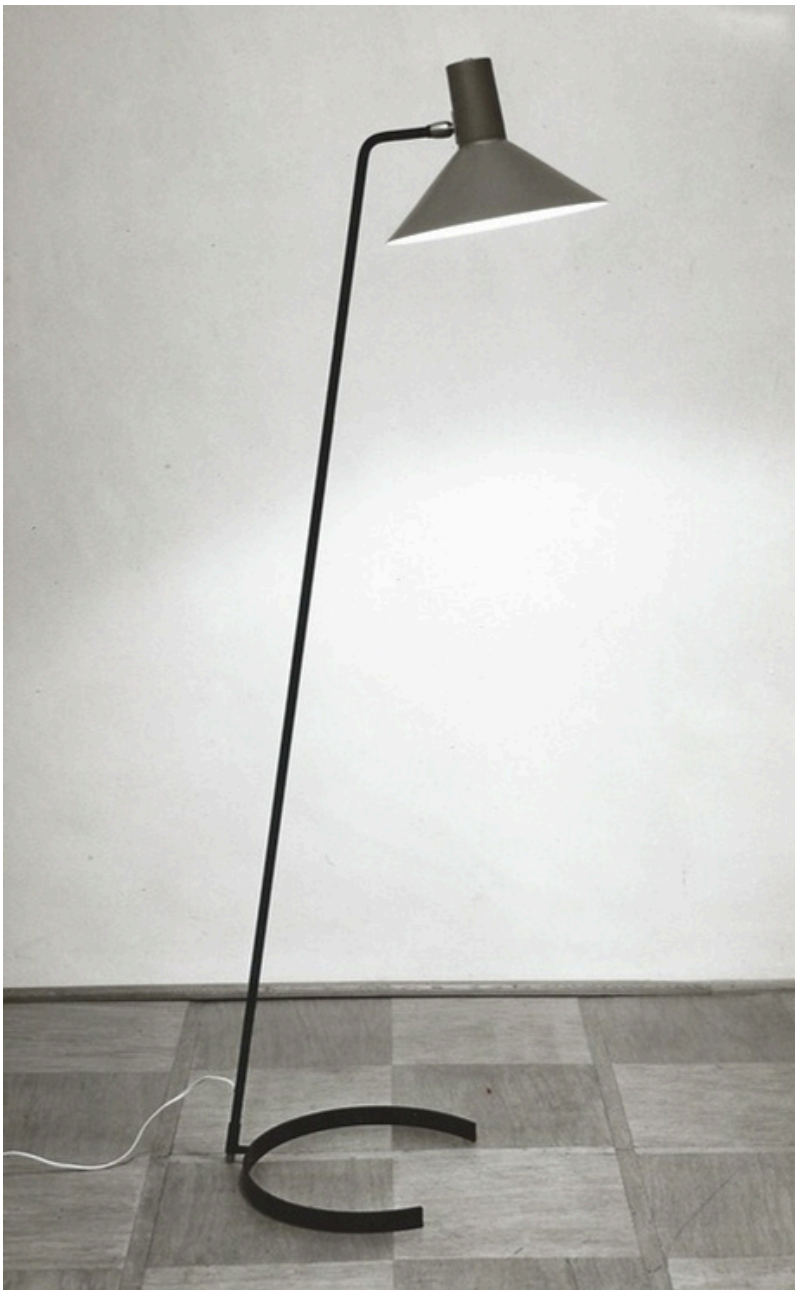
ICONS OF LIGHT

2001 | The Flying Duke

The retro ceiling counterbalance lamp 2001 is based on one of the very first counterbalance designs by J.J.M. Hoogervorst from the mid-1950s. Its elegant mechanism allows the lamp to move effortlessly up and down, while the shade can be adjusted into multiple positions. A true pioneer of functional Dutch lighting design, 2001 combines engineering clarity with timeless character.

2202 | The Magistrate of Bornerbroek

The ceiling counterbalance lamp 2202 takes inspiration from Hoogervorst's immensely popular counterbalance lamp No. 5018. With its refined adjustable joint and balanced construction, the lamp can be positioned freely to provide precise, practical light. A celebrated classic within the ANVIA heritage, 2202 offers the same iconic flexibility with an unmistakably elegant presence.



1502 | The Grasshopper

Floor lamp No. 1502, The Grasshopper, is based on a floor lamp produced on a limited scale around 1955. The lamp shade is adjustable into various positions which makes it extremely functional. This large floor lamp with a tripod foot and a counterbalance makes a statement in every interior.

1505 | The Horse Shoe

Greatly designed floor lamp with a distinctive C-shaped base. A true one-of-a-kind design, this original ANVIA Type 8025 was first created in the mid-1950s, and the photograph shown is from that period. The design has been carefully recreated to meet modern standards while preserving its authentic character and proportions. The lamp can be mounted in two different positions.



2004 | The Duke

Wall Lamp No. 2004 is based on the iconic shade design of the counterbalance lamp No. 2001, The Flying Duke. Equipped with an E27 fitting, it is supplied with a matching LED mirrorhead light source, ensuring both visual harmony and a warm, refined illumination.

1602 | The Paperclip

Wall Lamp No. 1602 is inspired by an early ANVIA Classics elbow lamp from 1955, originally introduced as model 748-08 and later known as 7058. With its subtle, minimalist appearance, it embodies the elegance of modern mid-century design. Thanks to its articulated elbow construction, the lamp can be adjusted into countless positions, offering exceptional flexibility. With a maximum reach of 100 cm and a freely movable shade, No. 1602 provides both functional versatility and timeless refinement.



A PIECE OF LUMINOUS HISTORY.

1506 | The Upperking | design by Jan Hoogervorst

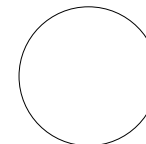


MATERIALS & COLOURS

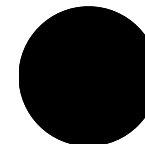
Across all our collections, we work exclusively with the highest quality materials, combining precision-engineered aluminium and carefully crafted steel components. Every fixture is built from durable, refined elements that ensure longevity, performance, and a flawless aesthetic. From structural parts to the smallest details, we apply the latest production techniques and continuously improve our materials and processes. This commitment to excellence forms the foundation of every design, allowing both timeless elegance and complete freedom in finishing and customization.

Powder coating

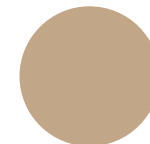
Our steel and aluminium fixtures can also be finished in high-quality powder coating. This technique provides a smooth, durable surface with a rich, contemporary look. Six carefully selected colours are available as standard, while an extended range of custom tones can be produced upon request.



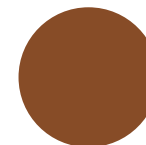
White



Black



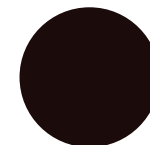
Quartz



Oxide



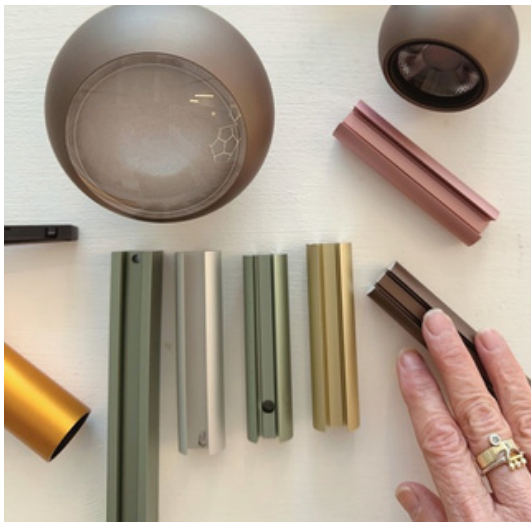
Silver Shimmer



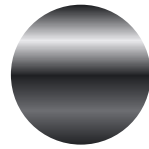
Carbon Flux

Anodised Aluminium

Our aluminium fixtures are available in a refined anodised finish, offered in thirteen distinctive colours. Anodising enhances the natural surface of the metal, creating exceptional depth, subtle gloss, and long-lasting durability. The result is a premium, elegant appearance with unique tones that cannot be achieved through standard coatings. Alongside a curated selection of standard finishes, additional anodised colours are available on request, allowing complete freedom in matching any interior concept.



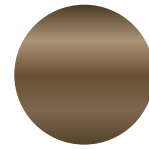
STANDARD COLOURS



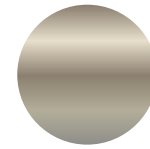
Deep Black



Pure Aluminium

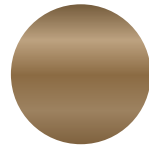


Olive Brown

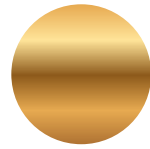


Champagne de Reims

OPTIONAL COLOURS



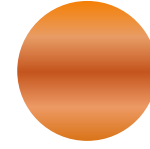
Cappuccino



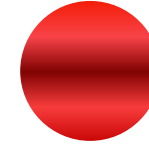
Bar of Gold



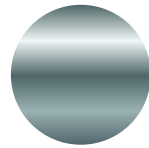
Rosso Italiano



100% Orange



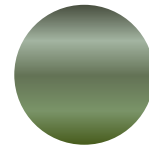
Dark Red



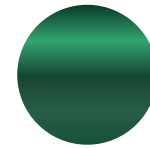
Sky Blue



Atlantic Blue



Thymus Green



British Racing Green

Your colour signature

We continuously follow the latest interior and design trends, translating them into a curated selection of contemporary finishes. For complete freedom, every luminaire can be produced in any NCS or RAL colour, allowing you to create a truly personal and unique piece.





MADE IN THE NETHERLANDS

All our products are proudly made in the Netherlands across three specialized production facilities, where craftsmanship meets precision and innovation. Every design is realized by skilled technicians, ensuring flawless execution from the finest detail to the overall form.

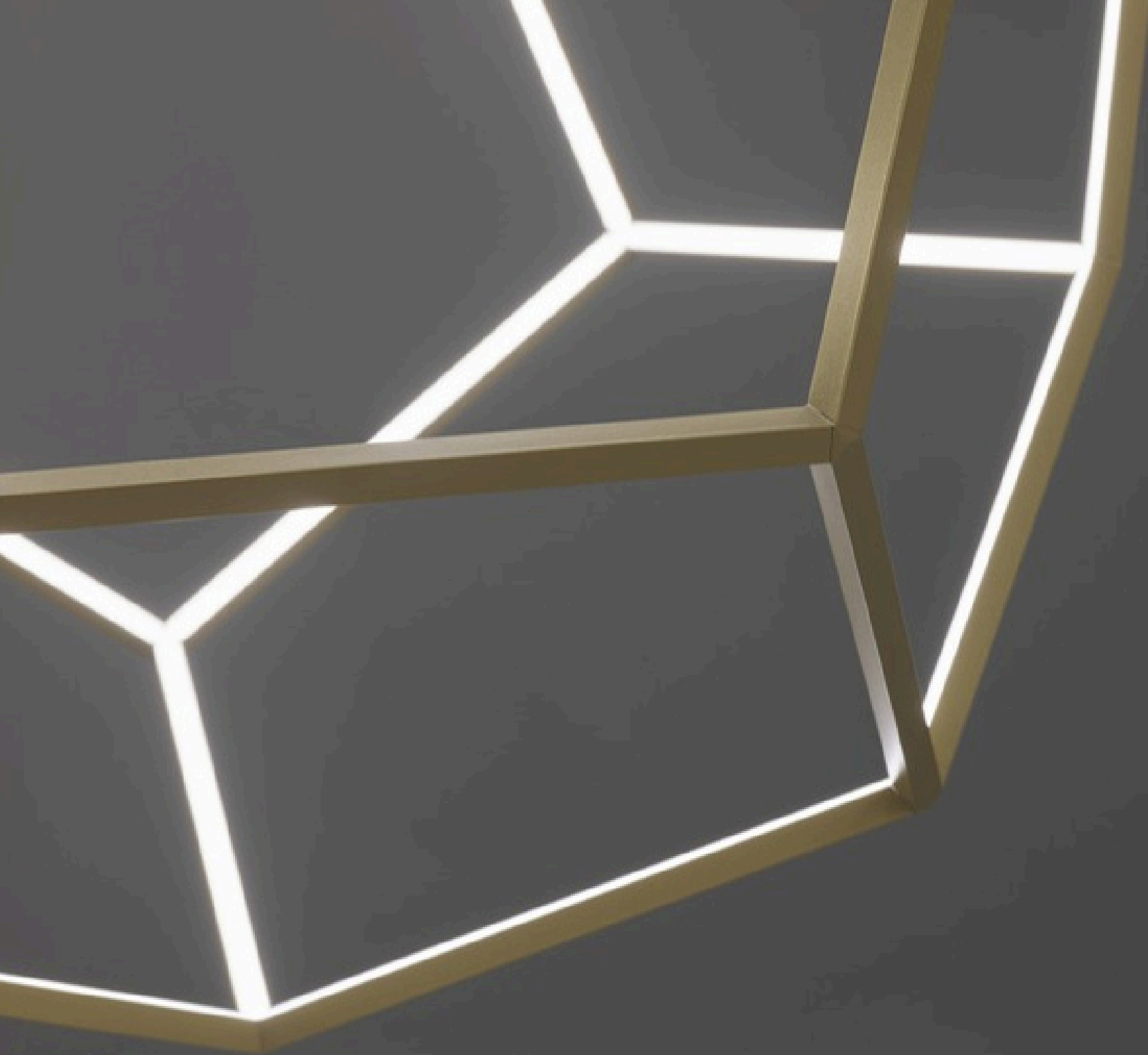
We embrace the latest control systems, including Casambi, DALI-2, 1–10V, and Zigbee (for Philips Hue integration), alongside smart lighting features such as tunable white. Many fixtures now also offer mechanical or electric height adjustment, bringing ultimate flexibility to both design and function.

This approach ensures each luminaire performs seamlessly while enhancing the atmosphere and experience of any space. Every piece reflects our commitment to precision, innovation, and timeless Dutch design.

1504 | The Attorney-in-Fact | design by Jan Hoogervorst



Wheel | design by Richard Hutten



Dodeca | design by Willem Schouten



BESPOKE LIGHTING & MADE TO ORDER

All our brands, Ferrolight, Japth, and Anvia Classics, are fully bespoke and made to order. Every piece can be tailored to your project's exact requirements, giving you the freedom to create truly unique designs. From dimensions and materials to finishes and detailing, we can realize even the most ambitious visions.

Because all production takes place in the Netherlands, we maintain full control over quality, execution, and timing. This ensures that each project is crafted to the highest standards and delivered with precision. Our local production also allows us to offer short lead times, making even complex custom projects feasible within realistic schedules.

This combination of flexibility, craftsmanship, and efficiency is our greatest strength. Every project becomes a one-of-a-kind statement, fully tailored to your needs, with the reassurance of Dutch quality.



Tray | design by Richard Hutten

COLOPHON

Every effort has been made to ensure accuracy, though typographical and printing errors may occur.

This publication brings together contributions from Dutch design partners and is proudly presented by Anvia BV, 2026.

With thanks to: Label van de Berg, Bert Plantagie, Gemar Keuken Interieurs Cuijk, Interior Vitamins, Van Mokum.

Art Direction / Graphic Design: Gisella Groenewoud
Photography: Raoul Hollants, ByBelli, Daphna Isaacs Burggraaf, Ingrid Roos.

TECHNOLOGY

Technical datasheets are available for all luminaires. Every piece is produced in accordance with European standards and can be tailored when required. Many models support advanced lighting controls, including Casambi, DALI-2, 1-10V Zigbee (for Philips Hue compatibility), combining precision engineering with maximum flexibility.



CONTACT

ANVIA BV

www.anvia.nl
info@anvia.nl

ADDRESS

Klokgebouw 237
5617 AC Eindhoven
+31 6 83 223 005





Echo Wall | design by ByBelli

